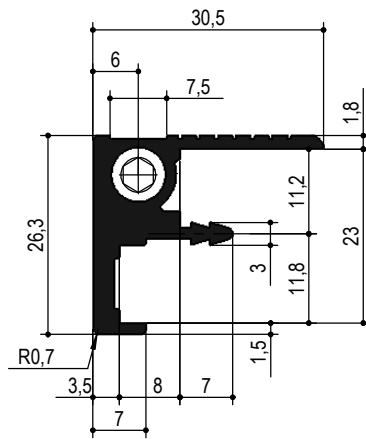




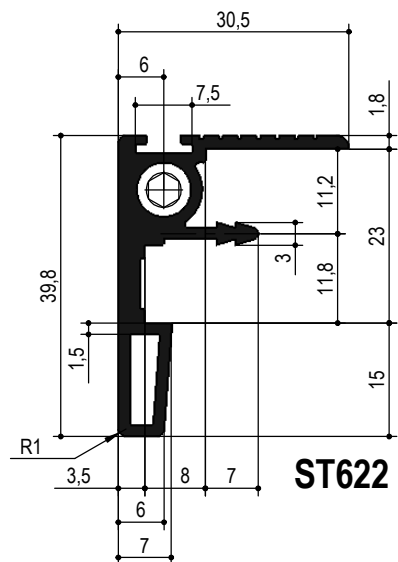
## Maniglie estruse in alluminio con tenditore integrato ST620 Aluminium extrusions for handles with integrated adjuster ST620

DENSITA' LINEARE  
ST621 790 g/m , ST622 880 g/m  
ST623 870g/m , ST624 460 g/m  
LUNGHEZZA: MIN 1200 MAX 2800

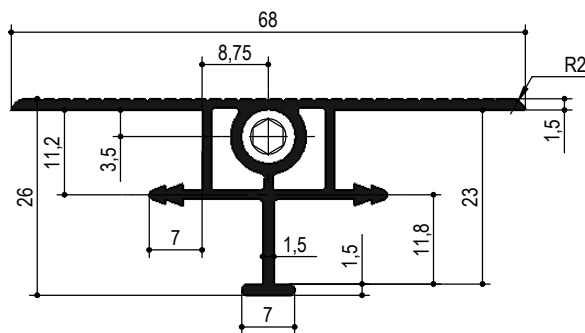
LINEAR DENSITY  
ST621 790 g/m , ST622 880 g/m  
ST623 870g/m , ST624 460 g/m  
LENGTH : MIN. 1200 MAX. 2800



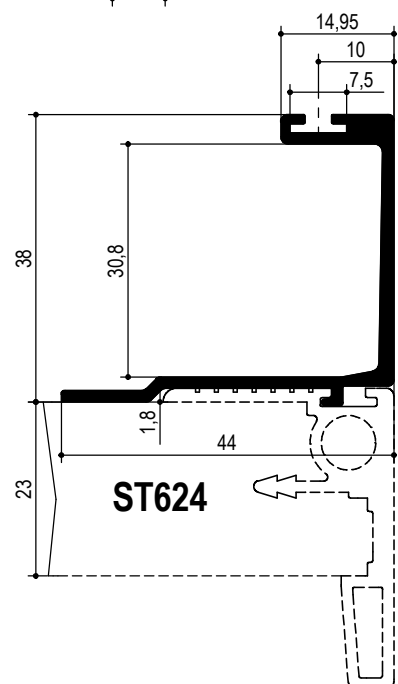
ST621



ST622



ST623



ST624

ACCESSORI PER ESTRUSI  
ACCESSORIES FOR ALUMINUM



4  
Estrusi all.  
Extruded alu.