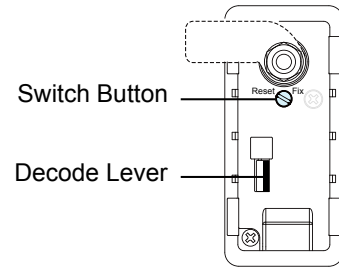
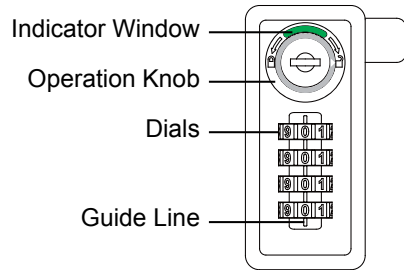


## How to decode the forgot combination ?



### ■ Master Key can be used to open the door in an emergency or when a user forget the original setting code.

1. Insert the correct Master Key.  
Turn the Master Key clockwise 180 degree to open the door (Fig. A).

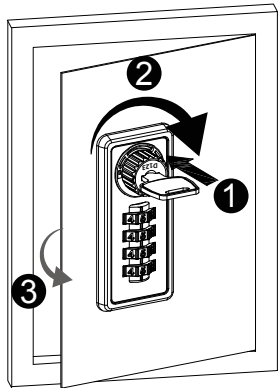


Fig. A



2. Make sure to turn the Master Key counterclockwise 180 degree back and then remove the Master Key from the lock. (Fig. B).

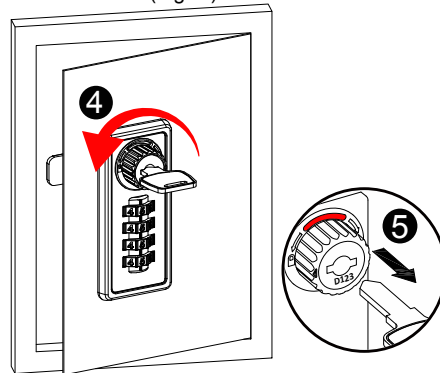


Fig. B

3. To decode your forgotten code, push the Decode Lever all the way while rotating each Dial from left to right until it stops or there is a "click" sound (Fig. C).

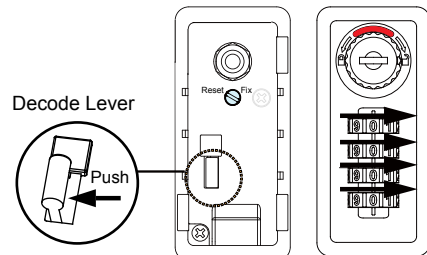


Fig. C

4. Release the Decode Lever then you will get the correct opening combination. You can now keep using the retrieved combinations or reset your new desired codes (Fig. D).

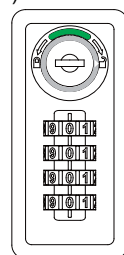


Fig. D

## How to reset your combination?

- To reset your new combination, there are 2 modes of operation, fixed combination or open-reset combination.
- The factory preset combination is 0-0-0-0.

### FIXED VERSION

In fixed combination mode, the lock is continually opened and closed with the same custom combination that was set.

1. Turn the Operation Knob clockwise 180 degree to the open position. The Indicator in the window will turn to green (Fig. E).
2. Turn the Switch Button on the back of the lock to the "Reset" position. (Fig. F).
3. Set the desired custom combination.
4. Return the Switch Button back to "Fix" position. Now, the lock is set to continuously open using the desired fixed combination (Fig. G).

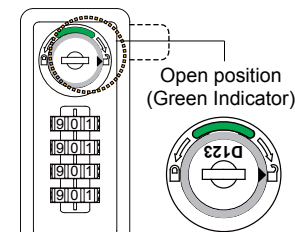


Fig. E

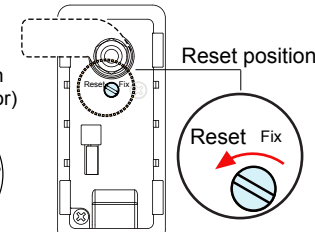


Fig. F

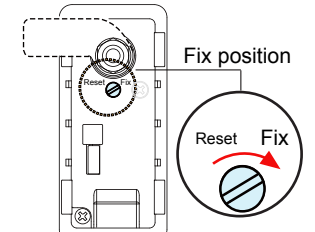


Fig. G

### OPEN-RESET VERSION

In the open-reset combination mode, the combination may be changed after each time the lock is opened.

1. Turn the Operation Knob clockwise 180 degree to the open position. The Indicator in the window will turn to green (Fig. H).
2. Turn the Switch Button on the back of the lock to the "Reset" position. Leave the button in this position (Fig. I).
3. Now, the combination can be resettable before turning the Operation Knob to the locked position (red indicator). Set your own desired combination before closing the door and remember your reset code (Fig. J).

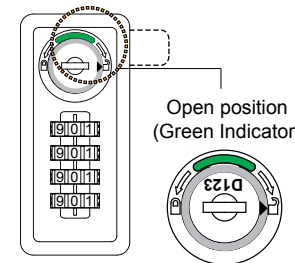


Fig. H

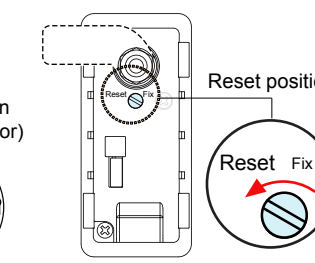


Fig. I

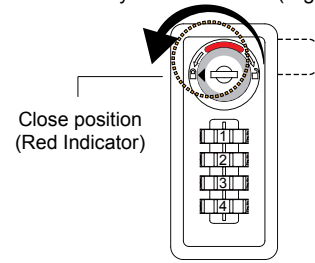


Fig. J

- Close the door and scramble the dials before leaving. Now your cabinet is locked.
- Always keep your secret combinations in a safe and accessible place for future reference.