

THE FUTURE OF CONNEC

TION

www.ovvotech.com

ovvo

Patent Pending 12701085.8

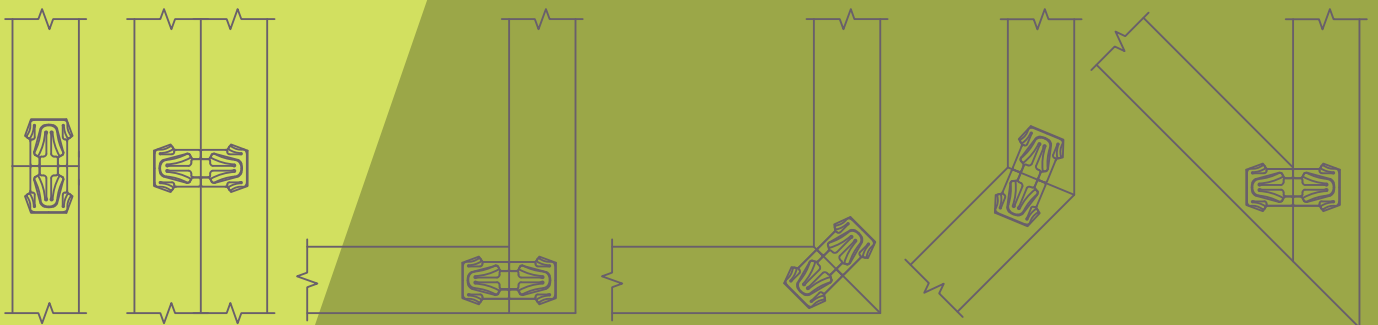


Introducing the all NEW “OVVO” Connection System.

The OVVO Connection System will eliminate hours of frustration that comes with flat pack assembly. There will be no more use for tools, glues or screws. The concept is a push fit solution that allows two pieces of material to join together easily without the use of traditional aids. The action is simple. All you have to do is press them together and wait for the ‘click’ which indicates that the joint has been made.

It is an invisible solution with one element embedded into the material while the interlocking, self clamping clip forms a tightly bond between the two pieces of material being joined.

The OVVO Connection System allows for a variety of joints and angles.



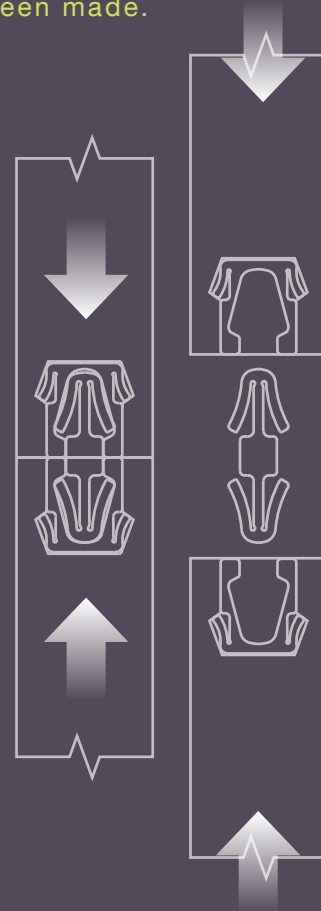
Key efficiencies by using OVVO Connection:

- 2 step milling process as opposed to traditional 3 step, saving of 30% on milling times.
- Transportation volumes are reduced by minimum of 50% because of its "flat pack" assembly.
- Savings of up to 80% on site assembly times can be achieved by using the OVVO Connection System.

"A simple, efficient, fast and rewarding assembly process for the end user which does not require the use of tools, glues or screws."

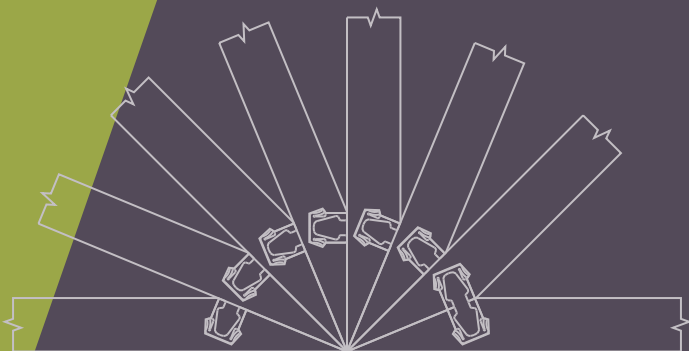


The action is simple, all you have to do is press them together and wait for the 'click' which indicated that the joint has been made.



OVVO is in the process of developing a suite of push-fit solutions, not just for jointing but for a wide range of applications within woodworking and other industries, other assembly solutions - other industries - no limits.

For manufacturing and transporting (large volumes) it is ideal, with no protruding parts therefore products are stackable.

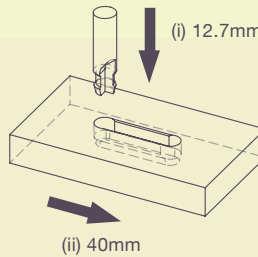


Milling

- (i) Plunge Depth: 12.7mm + - 13.1mm
- (ii) Travel Distance: 40mm

CNC Recommended Speeds

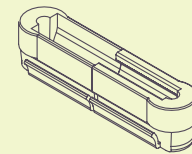
- Plunge: 2.5 Metres
- Travel: 5 Metres - 7.5 Metres
- Rotation: 18,000 Revolutions



Speed applies to MDF / Chipboard / Solidwoods

OVVO Cutter (12.7mm / 1/2")

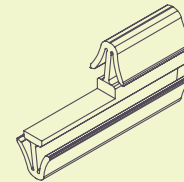
The Releasing Housing is pushed into the milled material.



RH 1240

Releasable Housing

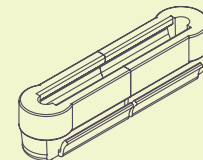
The OVVO Releasable Connector lets you assemble and unassemble products efficiently.



RC 1240

Releasable Connector

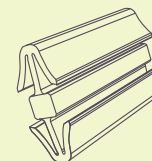
The Permanent Housing is pushed into the milled material.



PH 1240

Permanent Housing

The OVVO Permanent Connector is an invincible solution for connecting materials together permanently.



PC 1240

Permanent Connector